



THE WOLFF-AMERICAN "DUPLIX."

(Patents applied for).

R. H. WOLFF & CO., Limited,
MAKERS OF ALL KINDS OF HIGH GRADE CYCLES,
Foot East 118 Street, New York.

THE SOUTH PUBLISHING CO., ENGRAVERS & PRINTERS, 195 FULTON ST., NEW YORK.

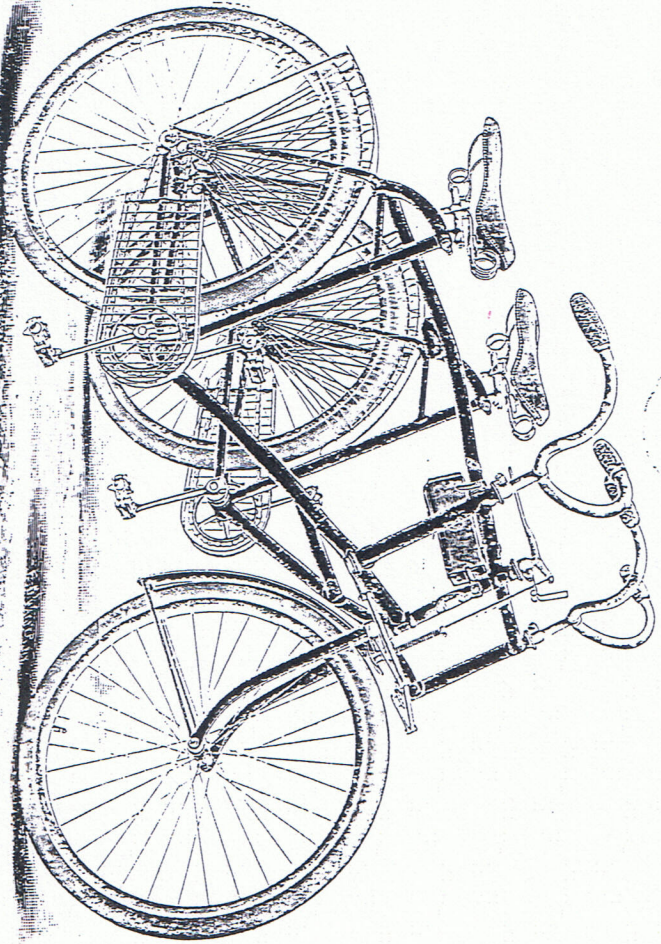


Wolff American Duplex

In giving to the cycling world the Wolff-American Duplex we have fulfilled a special commission. For a large class of riders there is no wheel that can take its place. It is in a class by itself. Graceful, dignified and practical. It can be ridden by two ladies or two gentlemen. The construction is such as to allow the propelling and steering to be done by either one or both riders, thereby allowing them to work or rest alternately. A special feature of the duplex lies in the fact that a beginner, either lady or gentleman, who has never sat on a wheel, can acquire the art of riding without undergoing the hardship of learning to ride a bicycle. A few trial spins on the duplex with an experienced rider will give the beginner confidence, correct position, balance and pedal motion, enabling one to ride a bicycle with perfect ease. With this wheel timid or frail riders will find an opportunity of taking healthful exercise or recreation who otherwise would never mount a bicycle. The demand for this model in the past has warranted special preparation for their manufacture, and there will be no delay in filling orders promptly.

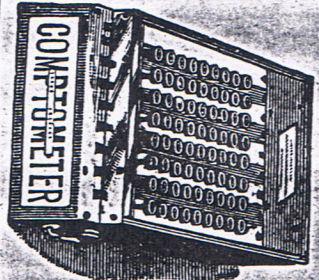
Specifications.—Specially designed frame of seamless cold drawn steel tubing. Three wheels, 26 inches, 40 rear and 32 front spokes. Wood rims. 1 1/4 inch tires. Patent self-lubricating tubular crank-shaft and hubs. Patent eccentric chair adjustment, block pattern, hardened centre link chain, 1/4 inch. Gear 59, 63 Cranks, 5 1/2 or 6 1/2 inch throw. Uprturned handle bar. Lantern bracket. Detachable mud and dress guard. Sager saddles. Wolff Indestructible rubber or rat trap pedals. Weight, 42 pounds.

We call special attention to the testimonials herewith given showing in what estimation this model is regarded. Have you a friend or acquaintance who is debarrd by partial or total blindness from ordinary exercise and pleasure derive from wheeling? To such a one you can do no greater kindness than by letting them know of the benefits to be derived by the use of this wheel.



Wolff American
Duplex \$200.

AMERICAN



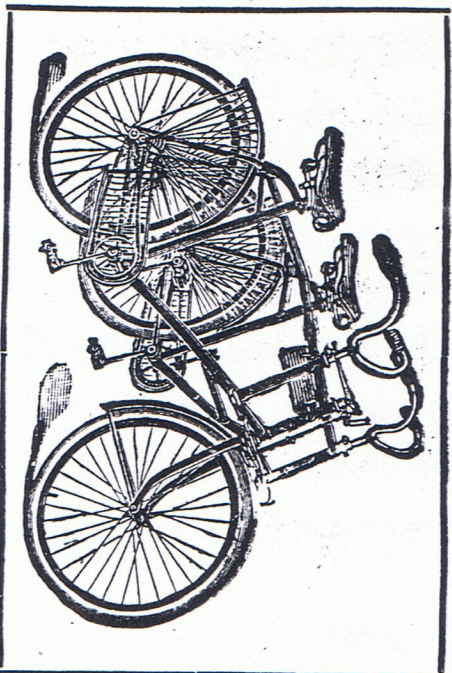
Mistakes in Addition, Office Headache, and mistakes in carrying forward don't occur where the Comptometer is used. It saves half the time in doing the work and all time looking for errors. Solves with great rapidity and absolute accuracy all arithmetical problems. Write for pamphlet.
FELT & TARRANT MFG. CO.,
52-56 ILLINOIS ST., CHICAGO.



Print My Own
 Cards, circulars, with
\$5 Press and save money.

Make money printing for others. Our \$8 Press prints a newspaper. Type setting easy, printed rules. Send stamp for catalogue, presses and supplies, to the factory.
KELSEY & CO.
 Meriden, Connecticut

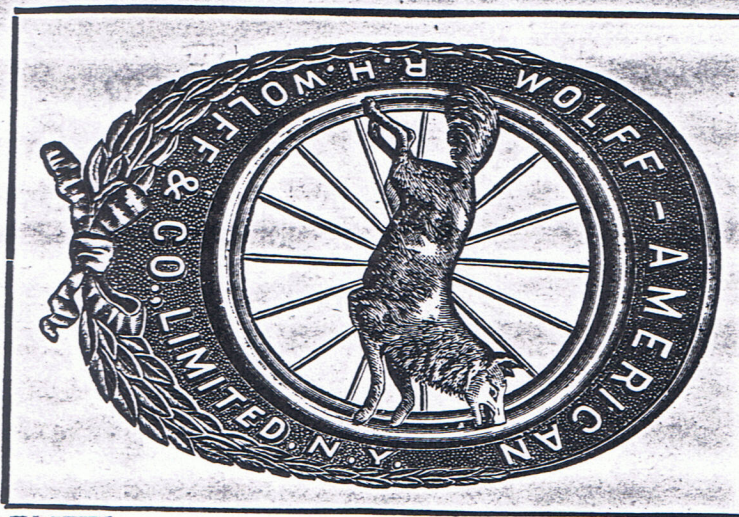
A Duplex for Nothing



To that person who gives us the Best Ten Reasons why the Wolff-American is the Finest Bicycle built in America, a \$200 Duplex will be presented. Acquaint yourself with the Wolff-American's special features and try for it.

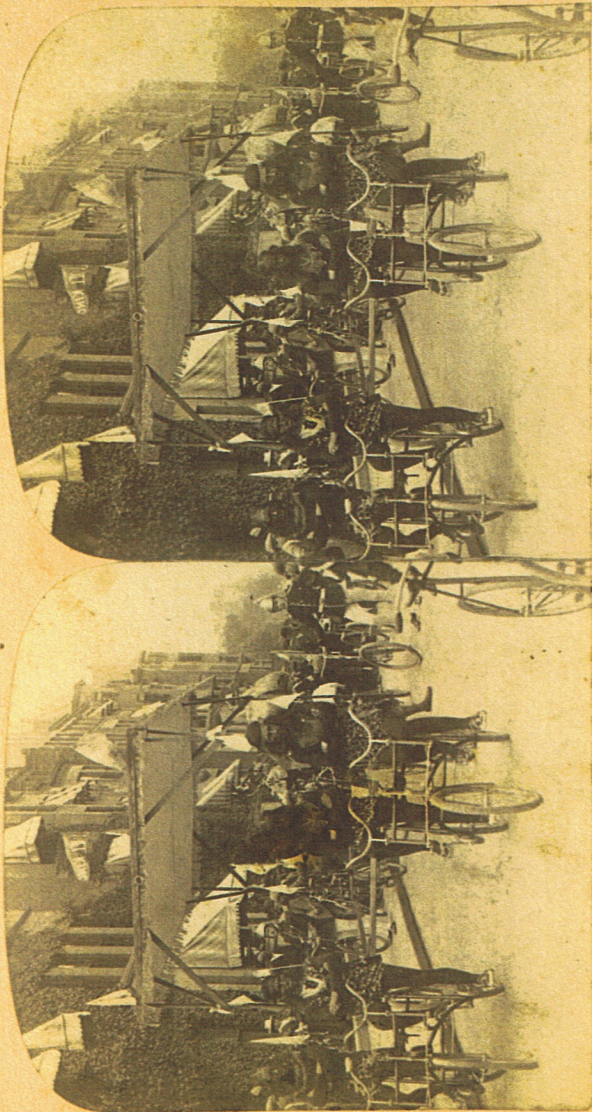
The decision, which will be left to a committee of experts, will be announced after March 1st. No communication in relation to the competition will be noticed unless addressed to Publicity Department * *

R. H. WOLFF & COMPANY, Ltd.
 116th, 117th, 118th Sts., Harlem River, New York.





AMERICAN & FOREIGN VIEWS



The World Stereo-View Co.
Albany, N. Y.